



PLAN A HEALTH



2020 ANNUAL REPORT

CONTENTS

- 2** From the Director
- 3** Our Mission
- 4** Our Team
- 5** Achievements
- 6** 2021 Future Plans
- 8** Financials
- 9** Donors

“

THE ONLY DOCTOR NEAR ME DOESN'T DO WOMEN'S HEALTH. I'D HAVE TO TRAVEL MORE THAN AN HOUR TO GET TO SOMEONE SO I JUST PUT IT OFF.

”

Jatina, age 35

FROM THE DIRECTOR

Two years ago, Plan A Health was founded with the goal of increasing access to reproductive and sexual healthcare in rural communities. Starting a program is no easy task. But in Mississippi, we found a remarkable team of passionate community members, leaders, and advisors willing to dedicate their time to helping us build a program rooted in the priorities and needs of the community. We took a grassroots approach to building this clinic and our focus in our first year was on seeking feedback and guidance to build a clinic and program that will be an active partner of the community, not just an exam room on wheels.

From institutions to organizations to individuals - every conversation has made Plan A stronger. We expanded the program from its initial narrow focus on birth control to a more holistic approach, including sexual health, primary care screenings, and social services. We selected specific counties to concentrate our efforts to address the areas of highest need. We took the spark of an idea and turned it into a fully fledged plan.

We intended to open the mobile unit in our second year but 2020 was not a year for "as planned." The state of Mississippi and the Delta region were hit particularly hard by the COVID-19 pandemic. Plan A, too, had to find our footing in this new world. We used the time to develop flexible operational plans, refine our strategies, and prepare for 2021.

Our conversations in 2019 helped us to define what the Plan A program and clinic should be. Our work in 2020 has made this plan a reality. We met our goals. We raised more than \$500,000, designed and ordered a custom mobile unit, and expanded our team.

This program would not exist without the community members, collaborators, partners, advisors, and donors, who transformed this concept into a program with enormous potential to improve the health of people in underserved communities.

We are excited and grateful to celebrate these milestones and share with you the road forward.

Caroline Weinberg

OUR MISSION

45%

of all pregnancies in the United States are unintended.

2.3

million cases of sexually transmitted infections are diagnosed annually.

22%

of uninsured women aged 18-44 have never had a gynecological exam.

Plan A mobile clinics bring health care directly to underserved communities, with an emphasis on improving sexual and reproductive health. We serve all people, regardless of insurance status, income, or location, and ensure access to affordable, quality, and compassionate care. We focus on:

Family Planning. Women living in rural areas are less likely to receive reproductive health services than those in urban communities. Nearly 45% of all pregnancies in the United States are unintended and rates of unintended pregnancies are almost 20% higher in Mississippi. Plan A takes a patient-centered approach to care, rooted in the principles of reproductive justice. Plan A clinics offer comprehensive contraception counseling and options.

Reproductive Health. Almost one quarter of uninsured women have not had a pap smear in the last 3 years. African American women in Mississippi are diagnosed with and die of cervical cancer at a rate nearly 50% higher than the national

average. The state also has one of the lowest rates of HPV vaccination in the country. Plan A clinics provide free pap smears and HPV vaccinations, in addition to breast cancer screenings.

Sexual Health. The state of Mississippi has the third highest rate of STIs in the country. Rates of new diagnoses of HIV have increased recently in certain counties in the state and young adults ages 20-29 account for more than 40% of new diagnoses. Plan A clinics provide HIV and STD testing and treatment and PrEP (HIV prevention).

Primary care. More than 45% of adults aged 19-64 are uninsured or underinsured. Rates of diabetes, hypertension, and obesity in Mississippi are among the highest in the country. Consistent primary care is key to preventing serious illness, but many lack access to basic screenings. Plan A clinics provide blood pressure, diabetes, cholesterol, and depression screenings. We work with local clinics to ensure patients receive ongoing care for medical issues.

OUR TEAM

STAFF



Dr. Andrea Collins
Collaborating
Physician



Max McKinney
Finance Director



Toria Shaw
Nurse Practitioner



Juliet Thomas
Community
Health Worker



**Caroline
Weinberg**
Executive Director

BOARD OF DIRECTORS

Gretchen Borchelt
National Women's
Law Center

**Dr. Pamela
Payne Foster**
Institute for Rural
Health Research,
University of
Alabama

**Jackie Sanders
Hawkins**
Delta Community
Solutions

Richard Levin
Seavest
Investment Group
(term begins 2021)

Melanie Richards
Glossier
(term begins 2021)

Diana Salas
National Latina
Institute for
Reproductive
Health

**Dr. Ivana
Thompson**
Vanderbilt
University School
of Medicine

Sharon Weinberg
Blue Leaf Ventures
(term ends 2021)

Mollie Williams
The Family Van

BOARD OF ADVISORS

Robin Boyles
Delta Health Center

Michelle Colon
SHERo Mississippi

Juanita Davis
Jackson Medical
Mall Foundation

Gloria Dickerson
We2Gether

Jitoria Jones
University of
Mississippi
Medical Center

Leandro Mena
University of
Mississippi
Medical Center

Cedric Sturdevant
PIER Outreach

**Wengora
Thompson**
CVS Health

RESEARCH & EVALUATION TEAM

Dr. Vincent Mendy
Jackson State
University

Jane Seymour
IBIS Reproductive
Health

Rachel Nation
Mailman School
of Public Health

Renee Iglesias
Mailman School
of Public Health

Jessica Havens
Mailman School
of Public Health

VOLUNTEERS

Sadie Cruz
Satoshi Endo
Landon Hopper
Jenny Hsieh
Pranav Ponnaluri
Maria Pyaterneva
Zoe Reich
Courtney Smith

ACHIEVEMENTS

150+

community members collaborated with us to build a program that centered on the priorities of the community.

40+

community organizations helped us to develop a program that would effectively address gaps in care.

October 2018. Plan A Health incorporated as a nonprofit on October 8, 2018.

December 2018. We had our first meeting in Mississippi.

February–July 2019. Throughout 2019, we hosted focus groups and interviews with community members and organizations to develop the program. These conversations helped us to determine what services we would offer, what kind of mobile unit we would design, and how we would approach care.

May 2019. We had our first meeting of the board of directors.

November 2019. Our board of directors and board of advisors gathered in Jackson, MS for a strategic planning meeting.

March 2020. We received our 501c3 nonprofit status from the IRS.

June 2020. We reached the target funding to purchase our custom built mobile clinic and set our launch for April 2021.

September 2020. New members joined our team: a community health worker and financial director.

October 2020. We partnered with the mayor of Louise, MS to establish a permanent brick-and-mortar clinic and office in the Delta.

November 2020. The build begins! As construction began on the clinic itself, the Plan A team worked to create partnerships and collaborations with local facilities, organizations, and community leaders in advance of our April launch.

“

MISSISSIPPI'S PUBLICLY-SUPPORTED FAMILY PLANNING CENTERS ARE UNABLE TO MEET 61% OF WOMEN'S NEEDS FOR CONTRACEPTIVE SERVICES. ”

Mississippi Center for Health Policy

2021 FUTURE PLANS

2,000 Patients. Plan A's mobile clinic will open its doors in April 2021 and expect to see 2,000 patients in our first year, providing reproductive and sexual health services and primary care screenings free of charge to underserved communities.

20 Community health events. We plan to host community health events in collaboration with community partners. These events

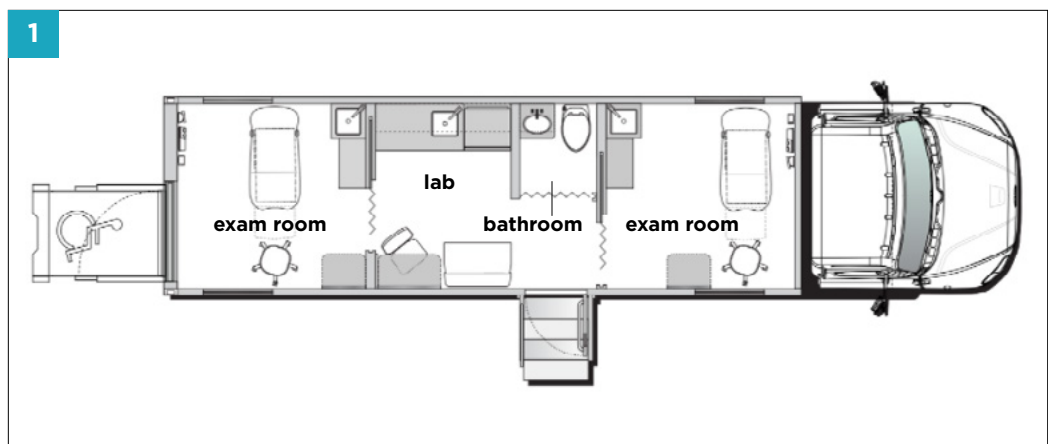
will follow best practices during the pandemic while providing essential care services to our communities.

40 Towns. Our mobile clinic will primarily serve small towns in the Delta with no existing providers.

30,000 Miles. Our clinic will serve 5 counties, traveling more than 30,000 miles as we deliver care to uninsured and underinsured residents of the region.

BUILDING A MOBILE CLINIC

1 Our mobile unit started with this floor plan. The custom truck features two OB-GYN exam rooms, a bathroom, and a lab space.



2 Exam Room 1



3 Exam room 2 includes a wheelchair lift, ensuring that healthcare is accessible to all.



4 In the lab area, our team will perform screenings including tests for HIV, STDs, and blood sugar level.



5 The clinic's bathroom includes a cabinet pass through for patients to discreetly leave samples at the lab area.



6 The 35-foot truck will serve towns in five counties, bringing care directly to underserved communities. It will feature a mural by local artist Sam McCain.



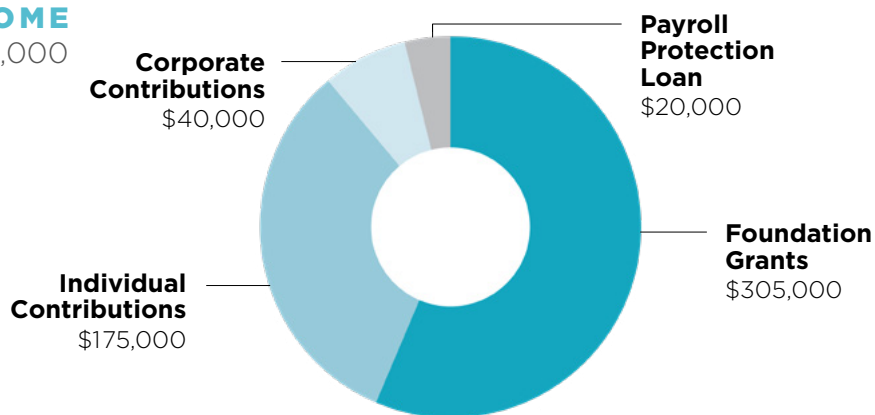
FINANCIALS

In 2020, we set out to raise the funds for our single biggest expense: our custom-built mobile clinic. Thanks to the generosity of our supporters, we were able to raise more than \$550,000, covering both the cost of the clinic and operating expenses in this early stage. As we open our doors in 2021, our financial sustainability plans include grants from state and federal agencies, direct service reimbursements, and the continued support of individuals and foundations. Together, we can keep these essential services free for all who need them.

Finalized financial statements for Plan A Health, Inc will be available in June, following our annual audit and completion of our 990. The breakdown of revenue and expense may change slightly when that process is completed.

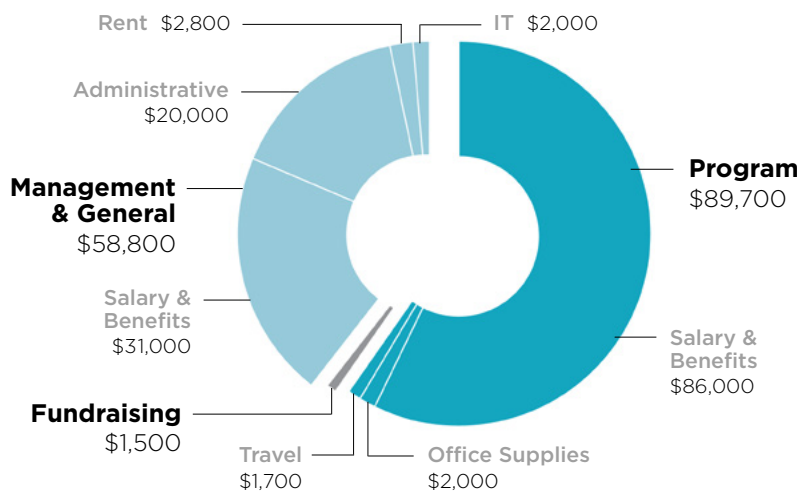
INCOME

\$540,000



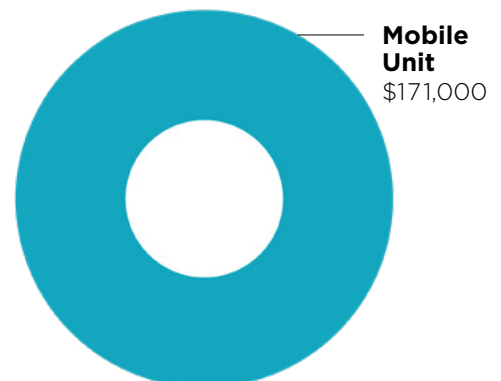
EXPENSES

\$150,000



MOBILE UNIT EXPENSE

\$171,000



DONORS

We offer our thanks to our donors at every level. Every single dollar helps us to bring healthcare to underserved communities. We are so grateful—whether it is \$5 or \$50,000—your support got us on the road and will keep us there for years to come.

Founder’s Circle: \$25,000 and above

Carrie Denning Jackson
 Cohen-Kramarsky Family Fund
 Roberta & Steve Denning
 Jill Lafer
 Tamer Fund for Social Ventures
 Tikkun Olam Foundation
 Women’s Foundation of Mississippi
 Anonymous

Driver’s Circle: \$10,000 and above

AL Mailman Foundation
 Chris Blum, Seven Bridges Advisors
 Rabbi Robert & Gina Levine, Congregation
 Rodeph Sholom
 Margot Lurie Zimmerman
 Anonymous

\$1,000 and above

Kim Coopersmith
 Ruth & Peter Goldstein
 Jamie Gorelick & Richard Waldhorn
 Carol & Richard Hochman
 Jewish Communal Fund
 Diane L. Max
 Katarina Mesarovich
 Kazie Metzger
 Laura & David Ross
 Judy & Donald Smith
 Peter Weinberg & Alexandra Lamm
 Anonymous



I DON’T HAVE A CAR SO EVEN WHEN THE DOCTOR IS FREE, I CAN’T AFFORD TO GET THERE. WHEN I NEED TO GO, I WAKE UP AT 6 AND STAND ON THE ROAD WAITING FOR SOMEONE TO BE GOING IN THE RIGHT DIRECTION. AFTER THE APPOINTMENT, I WAIT AT THE CLINIC FOR SOMEONE HEADING MY WAY HOME.



Evie, age 42



PLAN A HEALTH



PO Box 20066
New York, NY 10025
contact@planahealth.org